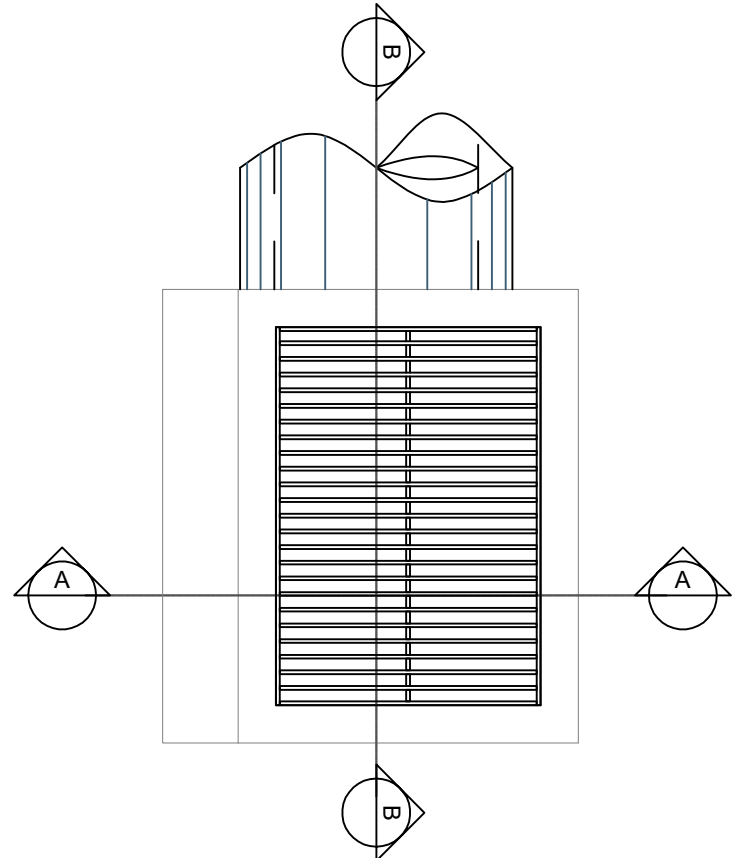
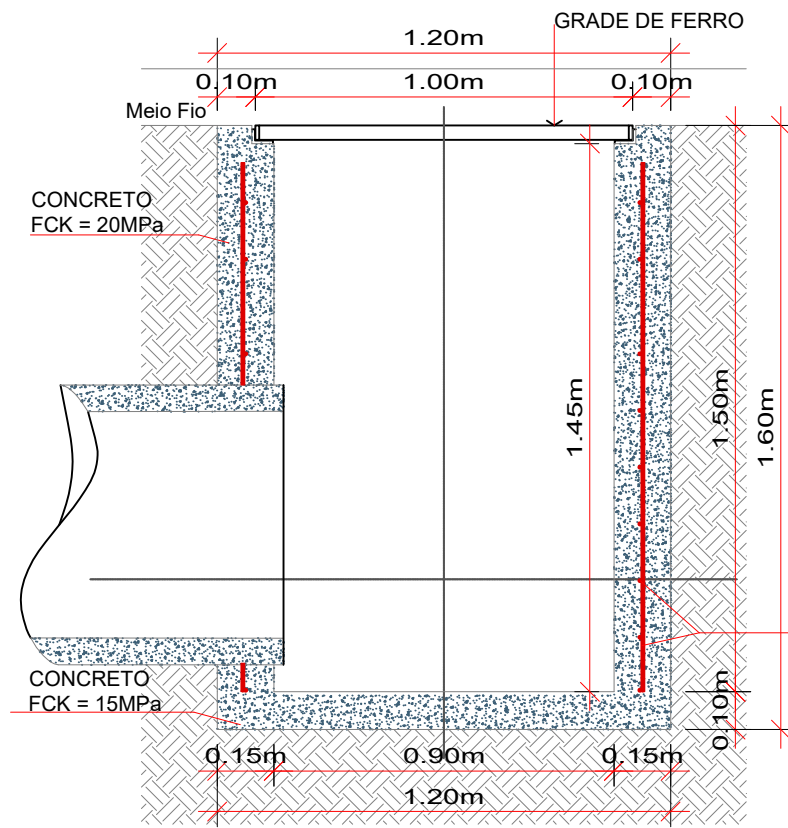


BOCA DE LOBO - TIPO II - Ø600mm



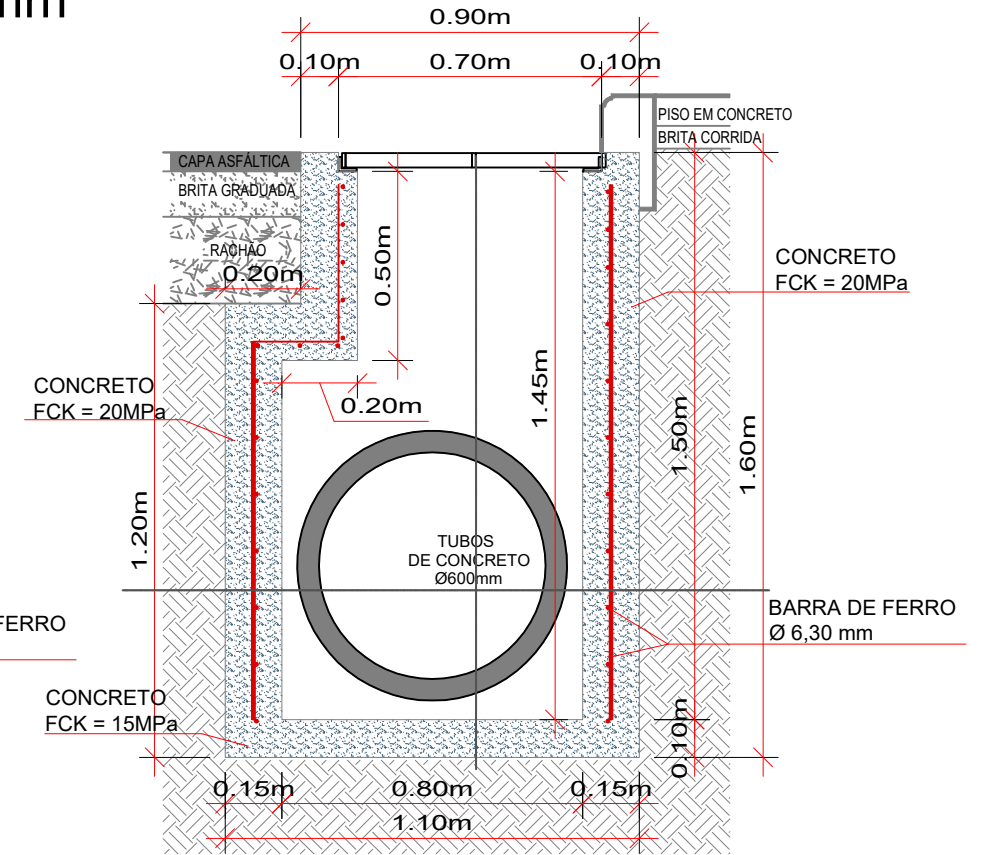
PLANTA BAIXA

Escala 1/20



CORTE AA

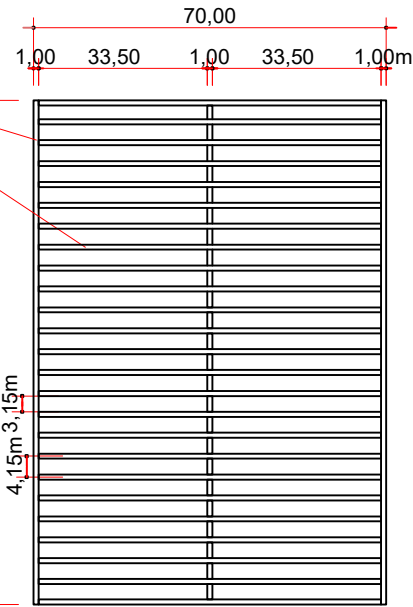
Escala 1/20



CORTE BB

Escala 1/20

BARRA DE FERRO CHATO LAMINADO
1 1/2" x 3/8"



VISTA SUPERIOR

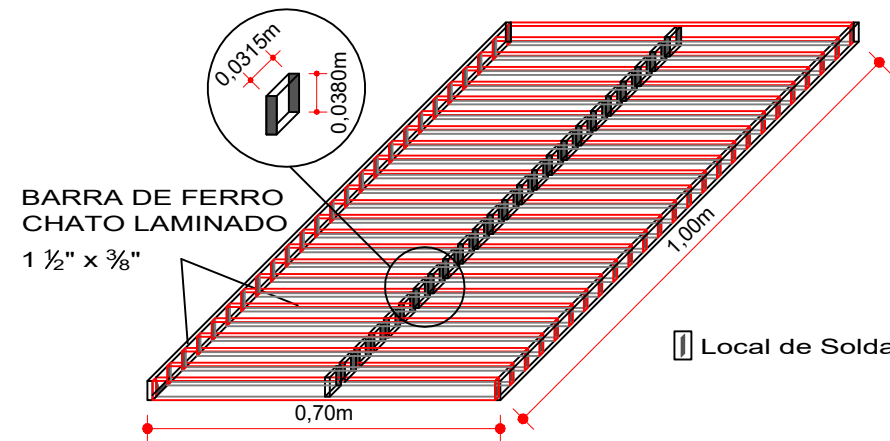
DETALHE APOIO DA GRADE

Escala 1/15

DETALHE DA GRADE

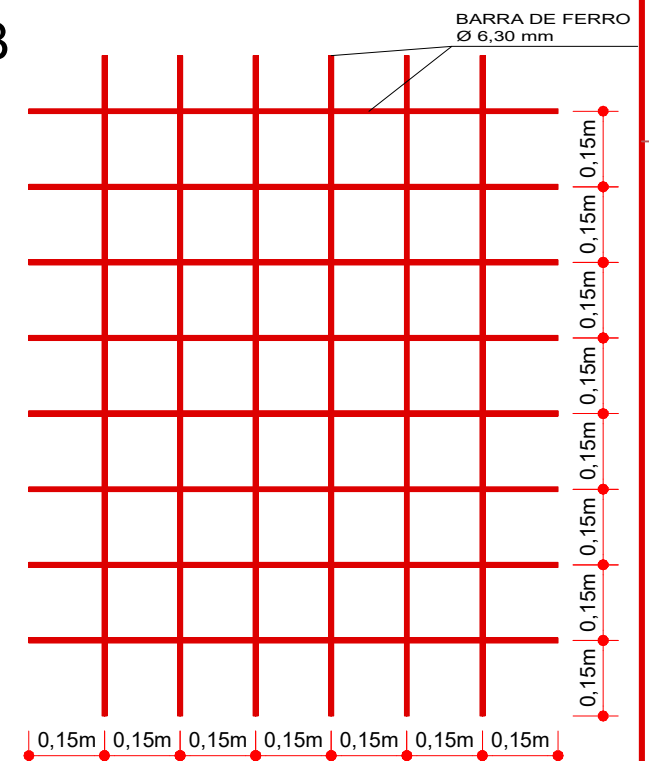
Escala 1/15

BARRA DE FERRO CHATO LAMINADO
1 1/2" x 3/8"



PERSPECTIVA DA GRADE

Escala 1/10



DETALHE DA ARMADURA

Escala 1/15

ENGENHEIRO RESPONSÁVEL

PREFEITO MUNICIPAL



Projeto: ANA JÚLIA UNGERICH - ENG. CIVIL - CREA/SC 105.295-8
DENIR NARCIZO ZULIAN - ENG. CIVIL - CREA/SC 50.805-8
MAX MOOSHAMMER - ENG. CIVIL - CREA/SC 139.164-0
MICHEL ALBERTI - ENG. CIVIL - CREA/SC 80.032-6

Desenho: LUCAS BALESTRIN Data: JUNHO DE 2019 Revisão: -

Projeto: PLANTA GEOMÉTRICA

Trecho: OPP - 145 + 4,00m

Prancha:

GEO. 24/24

Escala: INDICADA(S)