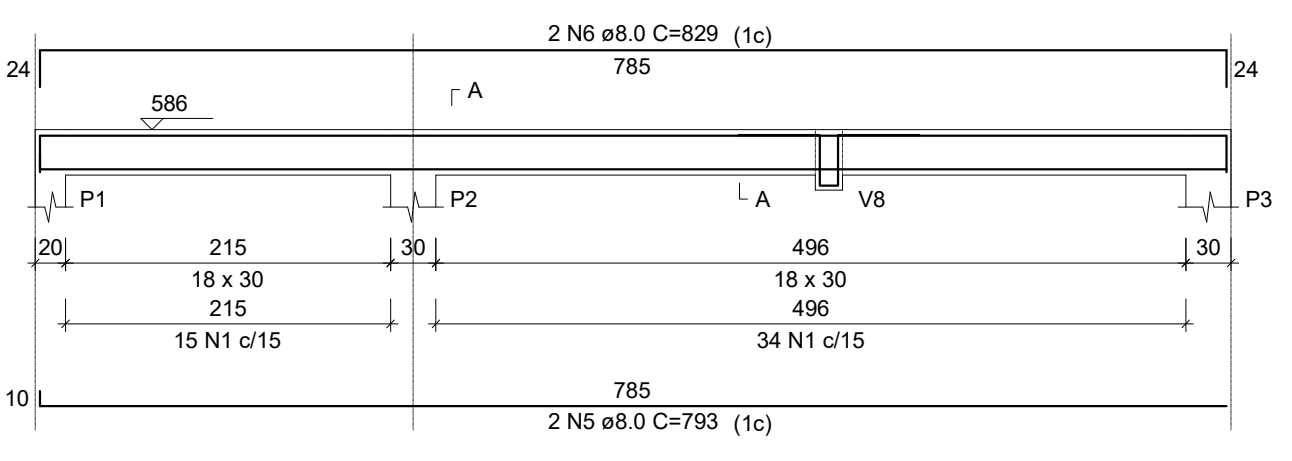
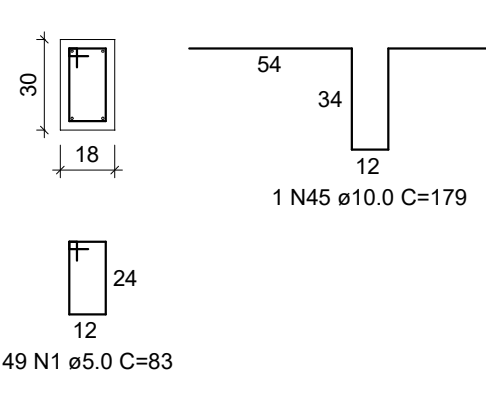


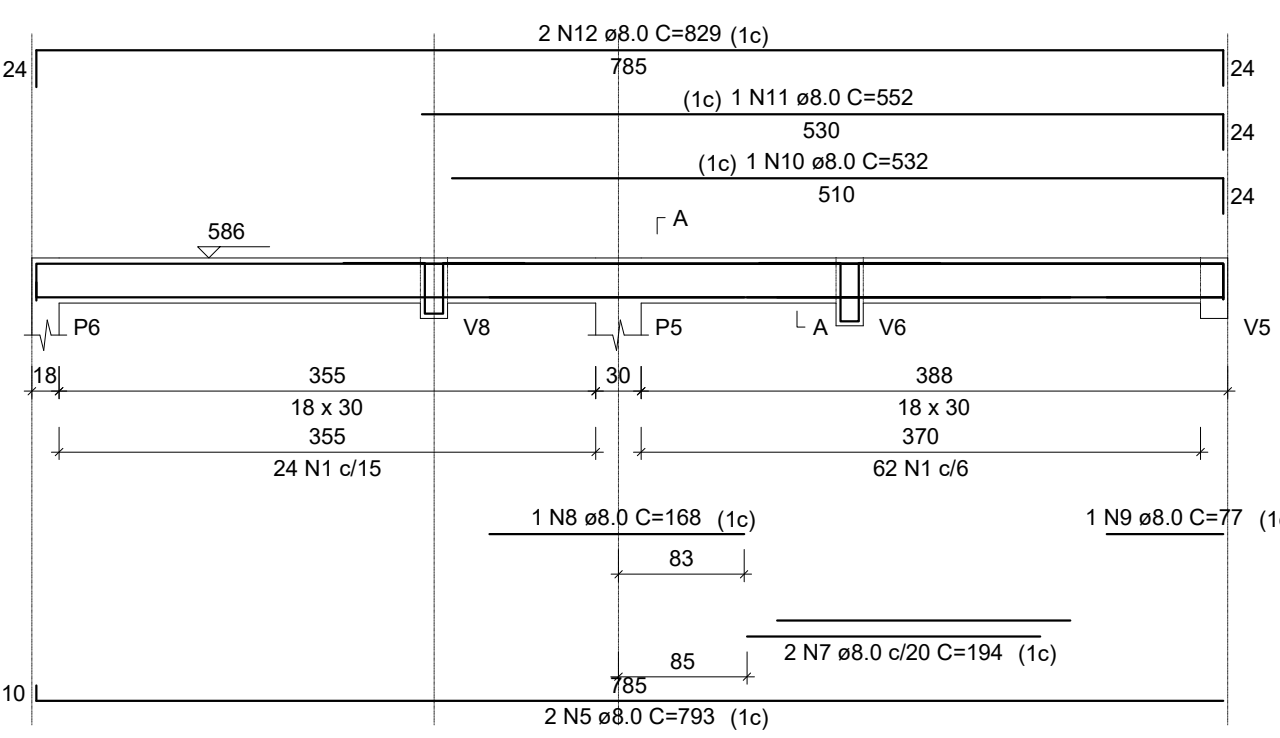
V1
ESC 1:50



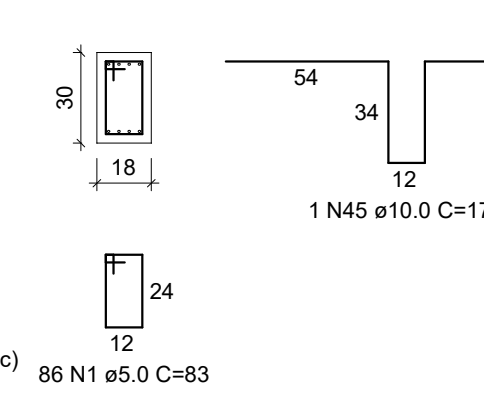
SEÇÃO A-A
ESC 1:25



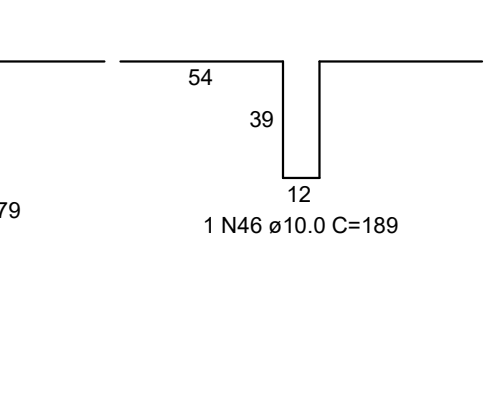
V2
ESC 1:50



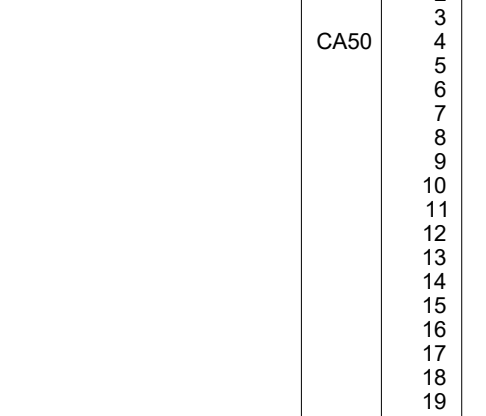
SEÇÃO A-A
ESC 1:25



SUSPENSÃO V8
ESC 1:25



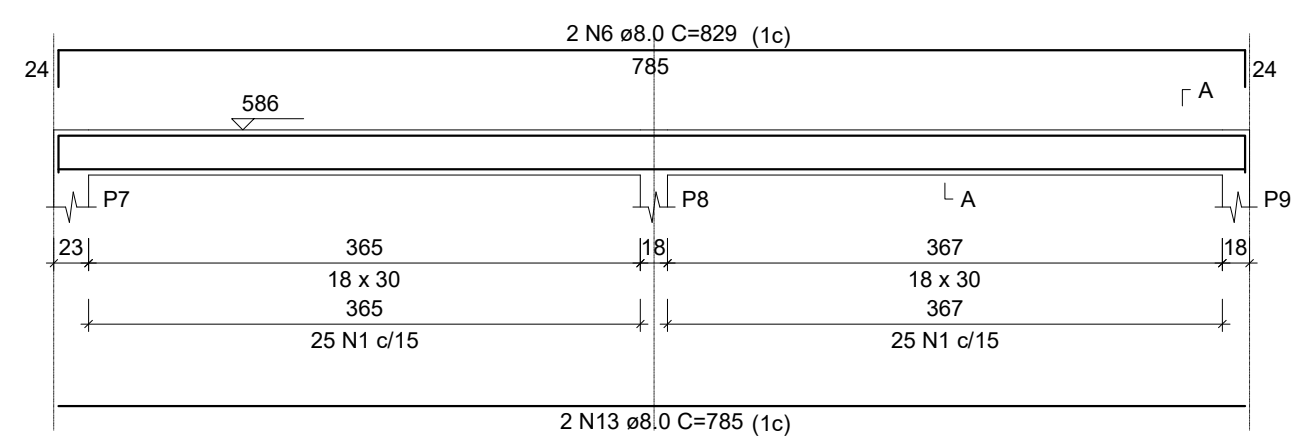
SUSPENSÃO V6
ESC 1:25



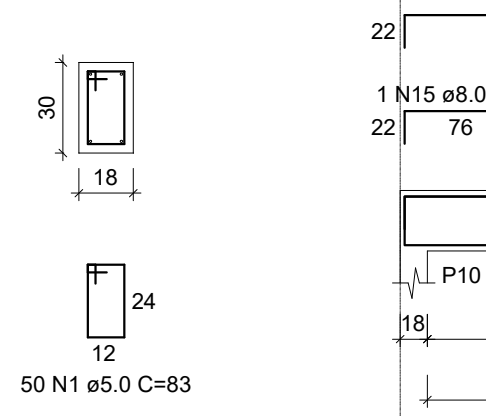
RELAÇÃO DO AÇO

AÇO	N	DIAM (mm)	QUANT	C.UNIT (cm)	C.TOTAL (cm)
CA60	1	5.0	185	83	15355
	2	5.0	176	103	18128
	3	5.0	10	113	1130
CA50	4	6.3	6	290	1740
	5	8.0	4	793	3172
	6	8.0	4	829	3316
	7	8.0	2	194	388
	8	8.0	1	168	168
	9	8.0	1	77	77
	10	8.0	1	532	532
	11	8.0	1	552	552
	12	8.0	2	829	1658
	13	8.0	2	785	1570
	14	8.0	3	801	2403
	15	8.0	2	96	192
	16	8.0	1	175	175
	17	8.0	2	825	1650
	18	8.0	1	235	235
	19	8.0	1	221	221
	20	8.0	1	191	191
	21	8.0	2	1051	2102
	22	8.0	2	102	204
	23	8.0	1	170	170
	24	8.0	1	388	388
	25	8.0	2	1091	2182
	26	8.0	3	218	654
	27	8.0	1	128	128
	28	8.0	2	277	554
	29	8.0	1	265	265
	30	8.0	1	191	191
	31	8.0	2	836	1672
	32	8.0	1	100	100
	33	8.0	1	150	150
	34	8.0	1	116	116
	35	8.0	2	876	1752
	36	8.0	3	235	705
	37	8.0	3	279	837
	38	8.0	1	220	220
	39	8.0	1	232	232
	40	8.0	1	265	265
	41	8.0	2	1059	2118
	42	8.0	1	160	160
	43	8.0	1	317	317
	44	8.0	2	1091	2182
	45	10.0	2	179	358
	46	10.0	1	189	189

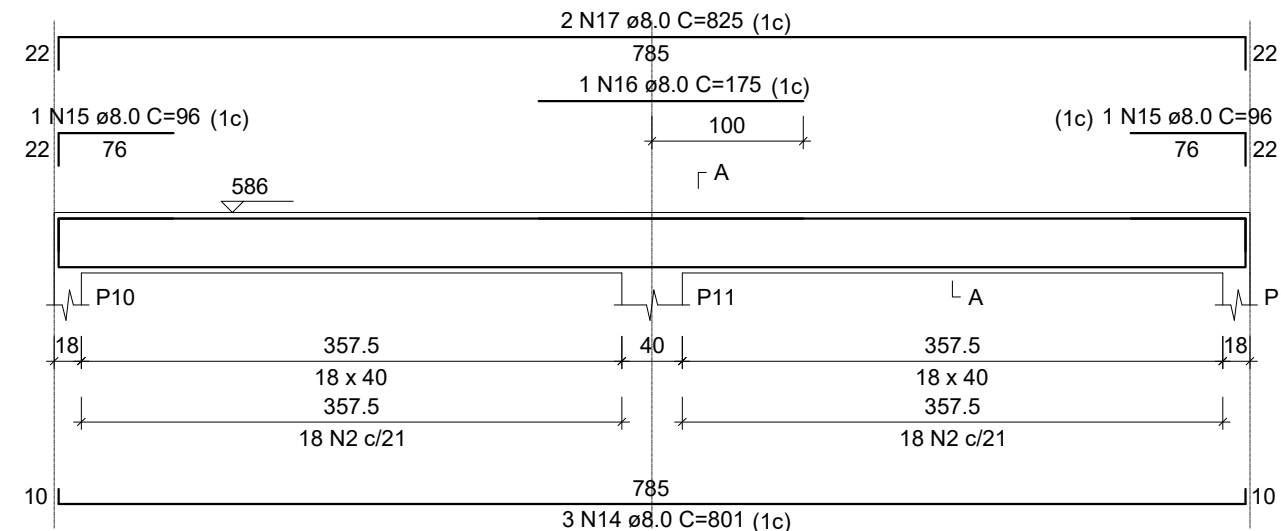
V3
ESC 1:50



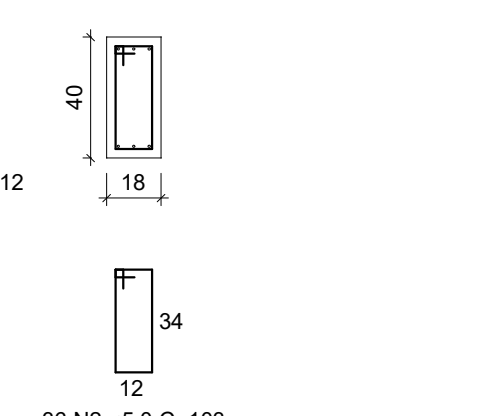
SEÇÃO A-A
ESC 1:25



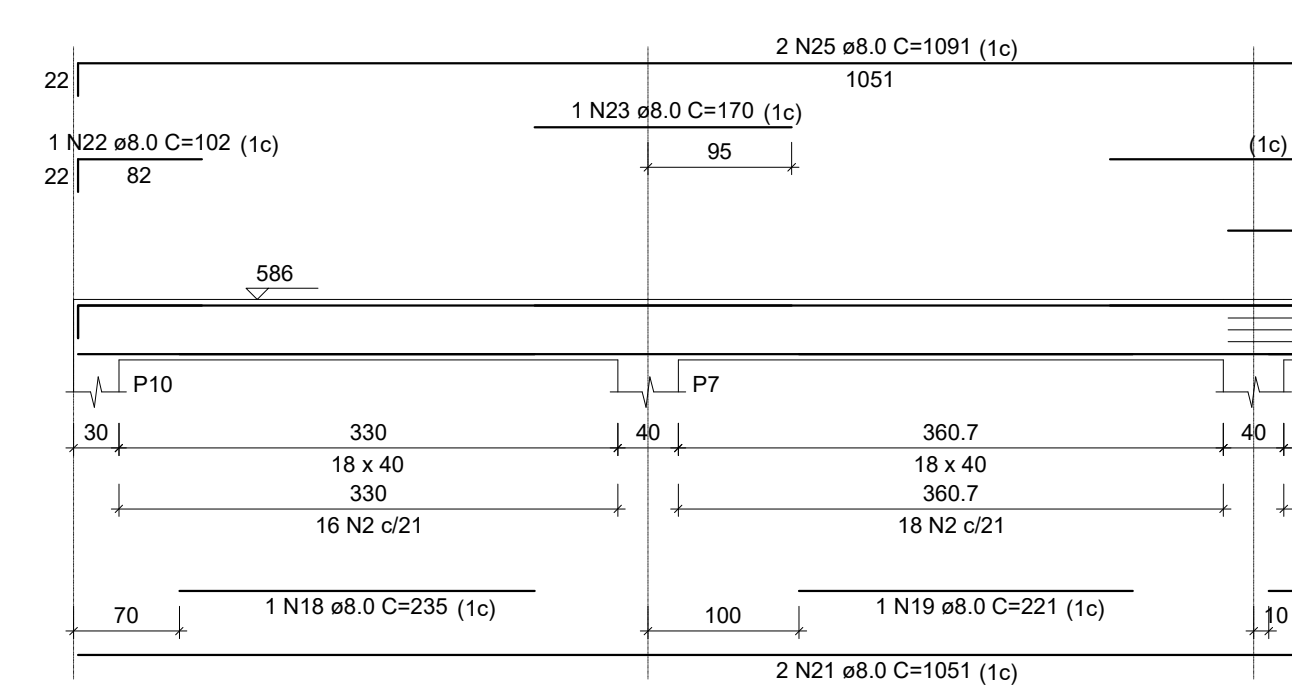
V4
ESC 1:50



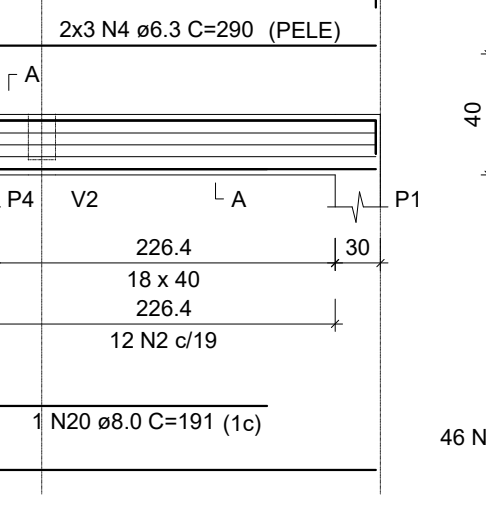
SEÇÃO A-A
ESC 1:25



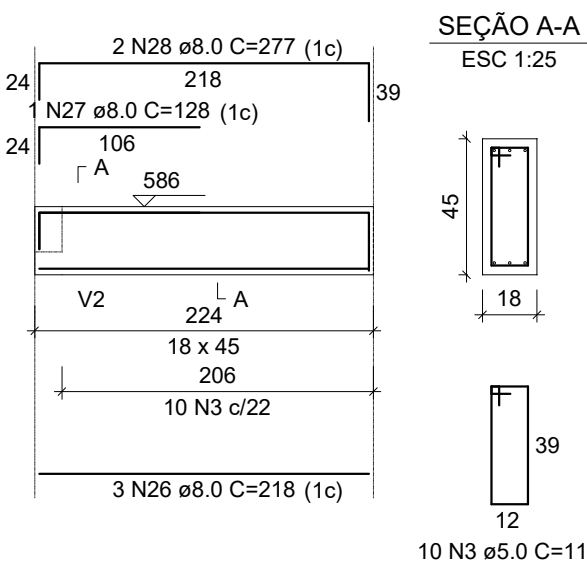
V5
ESC 1:50



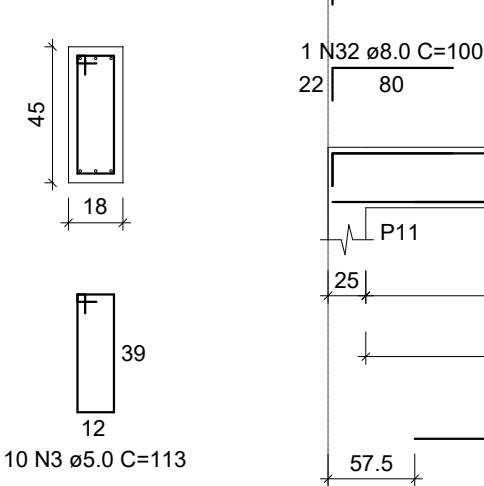
SEÇÃO A-A
ESC 1:25



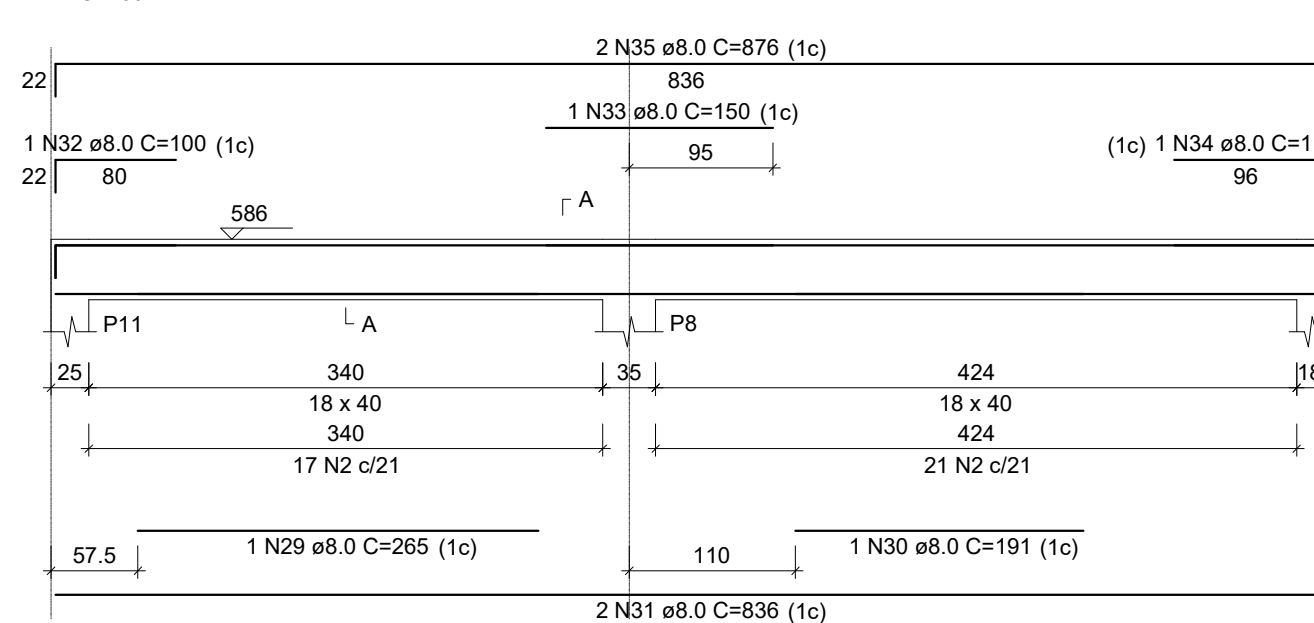
V6
ESC 1:50



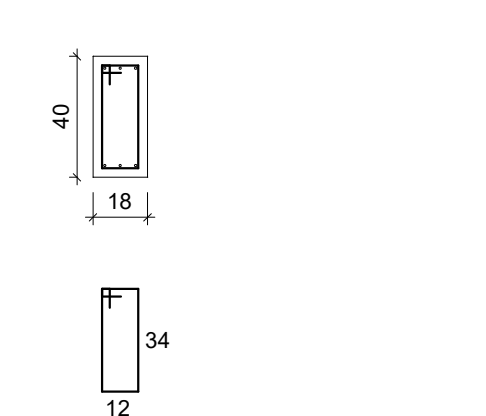
SEÇÃO A-A
ESC 1:25



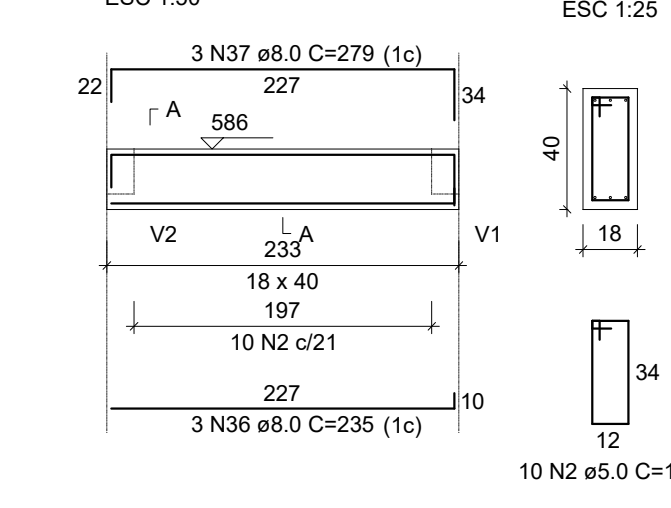
V7
ESC 1:50



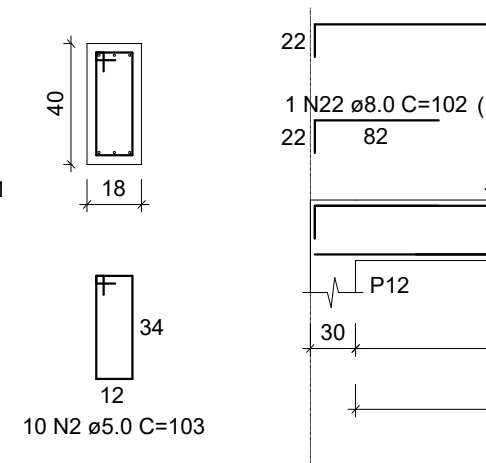
SEÇÃO A-A
ESC 1:25



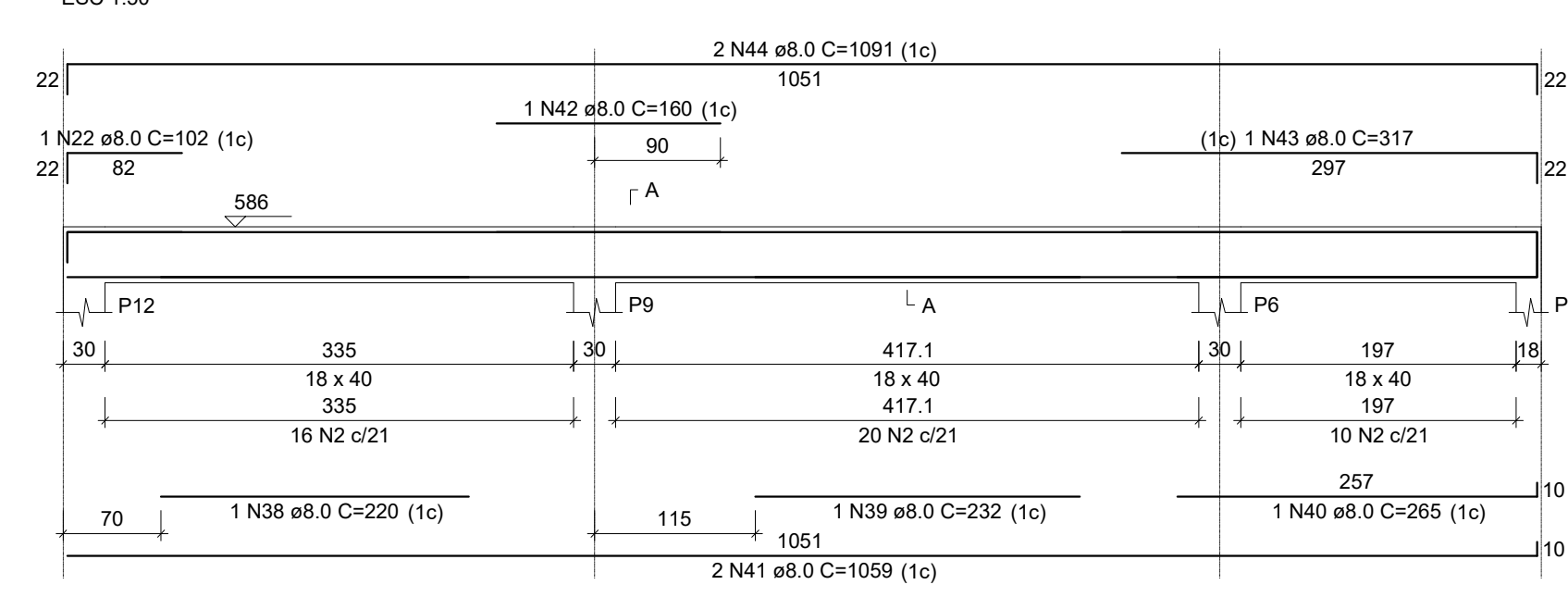
V8
ESC 1:50



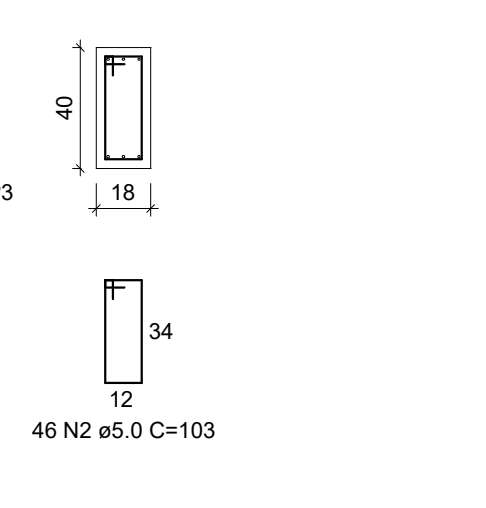
SEÇÃO A-A
ESC 1:25



V9
ESC 1:50



SEÇÃO A-A
ESC 1:25



RESUMO DO AÇO

AÇO	DIAM (mm)	C.TOTAL (m)	PESO + 10% (kg)
CA50	6.3	17.4	4.7
	8.0	341.6	148.3
	10.0	5.5	3.7
CA60	5.0	346.1	58.7
PESO TOTAL (kg)			
CA50		156.7	
CA60		58.7	

Volume de concreto (C-25) = 4.33 m³
Área de forma = 59.93 m²



Rua Roberto Trompowski, 68 2º andar - Tel: 49 3522.2800 Fax: 35220235 www.ammoc.com.br e-mail ammoc@ammoc.com.br - CPM/CABA SC

PREFEITURA MUNICIPAL DE CAPINZAL

Obra:	PROJETO DE REFORMA E AMPLIAÇÃO CIA LAR	Conteúdo:	VIGAS TOPO
Referência:	PROJETO ESTRUTURAL		
Local da Obra:	RUA EMILIO BARISON		
Quaisquer alterações consulte os responsáveis técnicos			
Assinatura Responsável Técnico		Assinatura Prefeito(a) Municipal	

Projeto:	DENIR NARCIZO ZULIAN - ENG. CIVIL - CREA/SC 50.805-8 MICHEL ALBERTI - ENG. CIVIL - CREA/SC 80.032-6 ANA JÚLIA UNGERICH - ENG. CIVIL-CREA/SC 105.295-8	Francha:	EST 09/09
Desenho:	ANDRÉ / MAX	Data:	ABRIL / 2016
Escala:	INDICADA(S)	Área Total:	