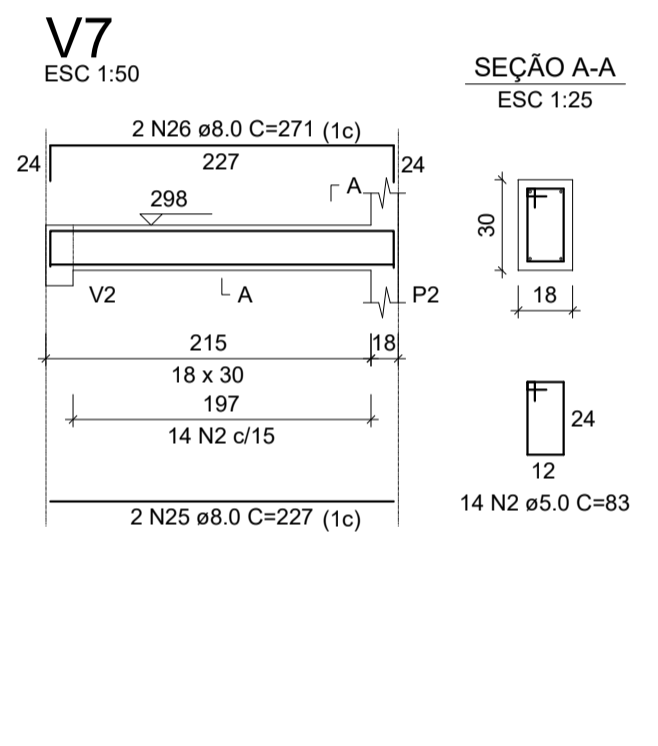
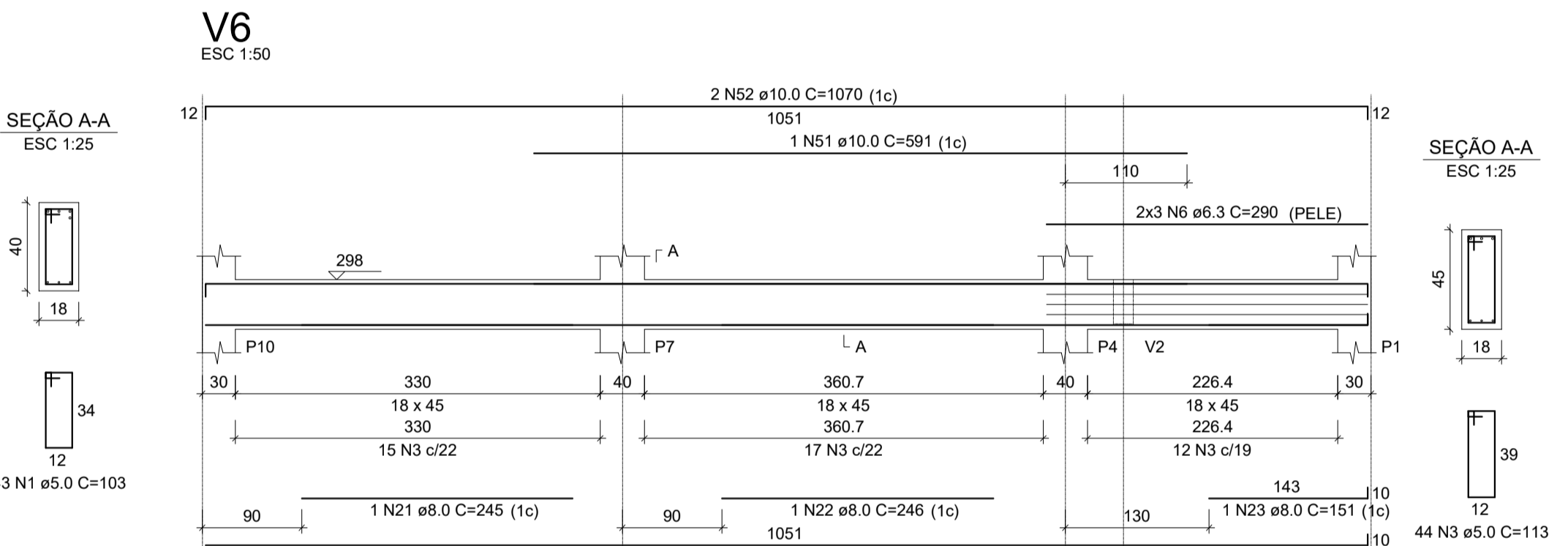
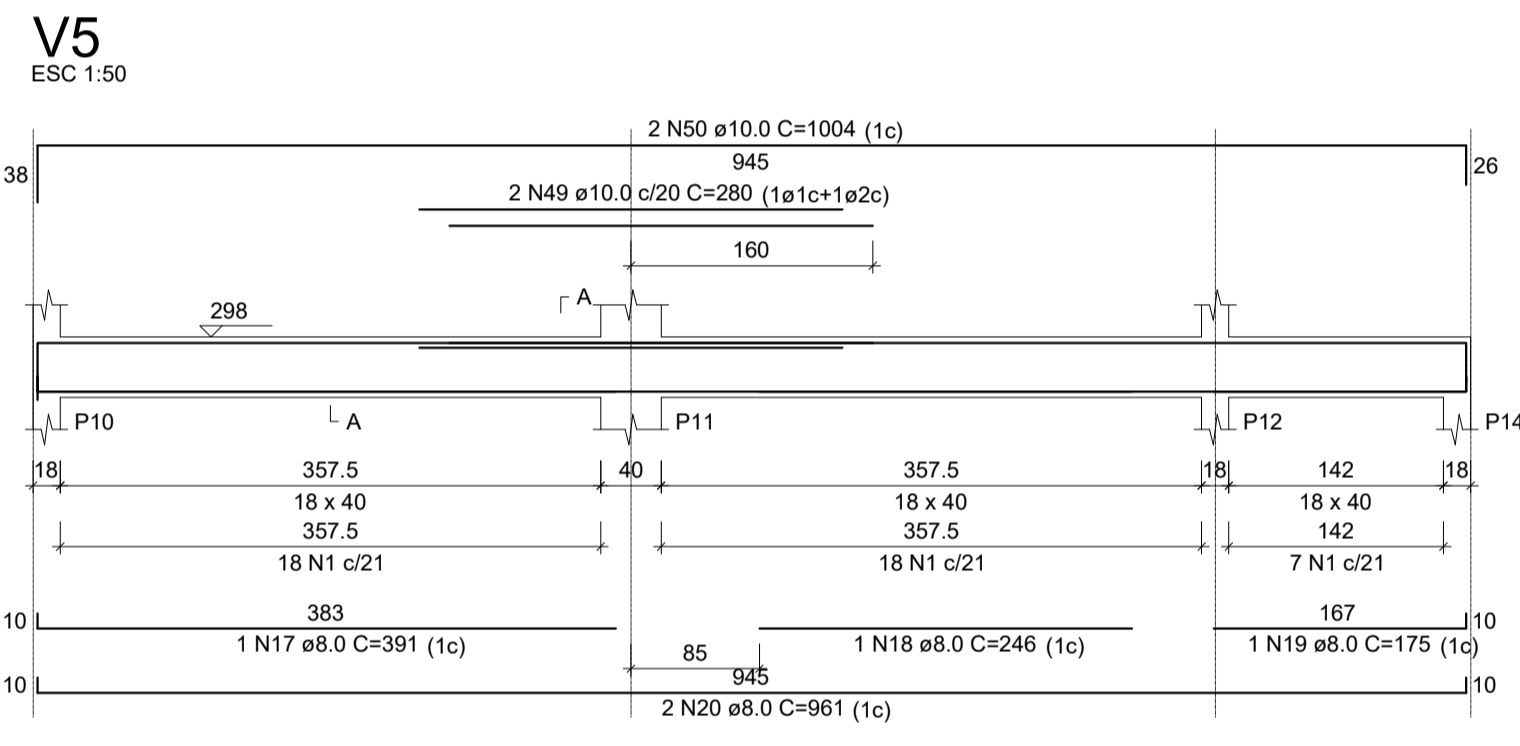


RELAÇÃO DO AÇO

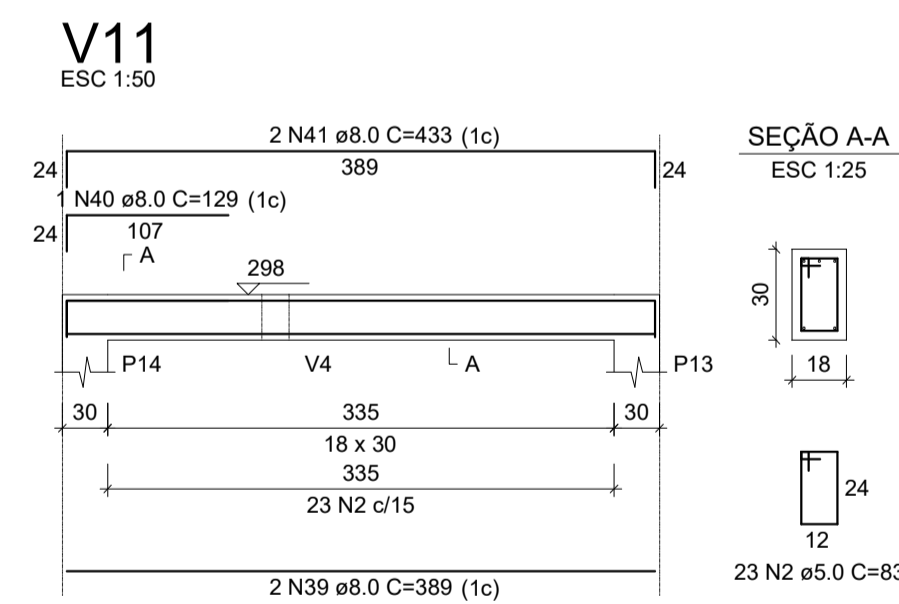
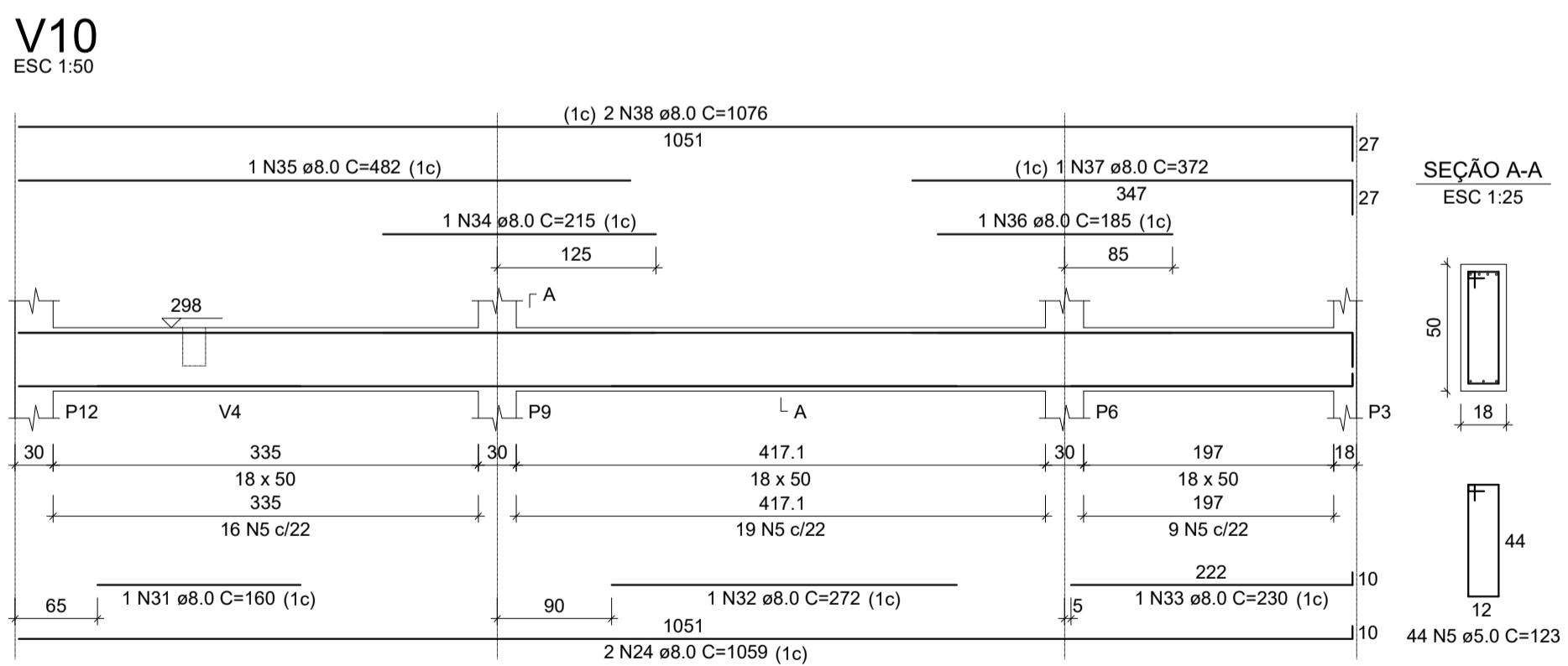
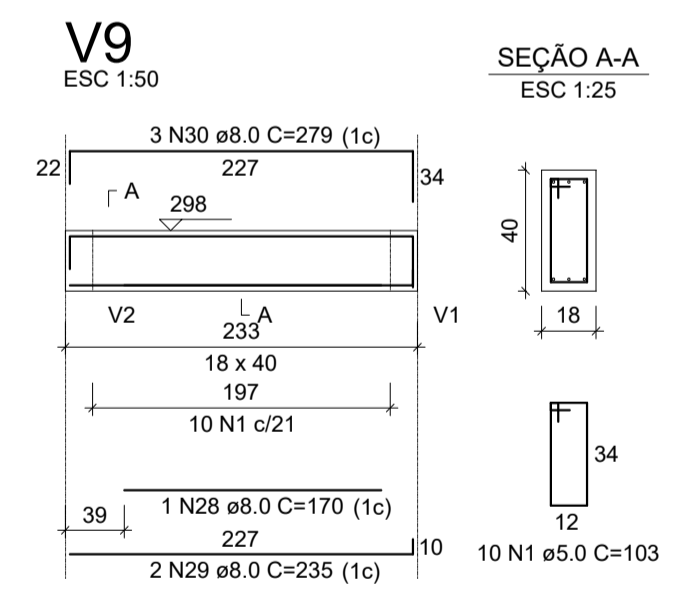
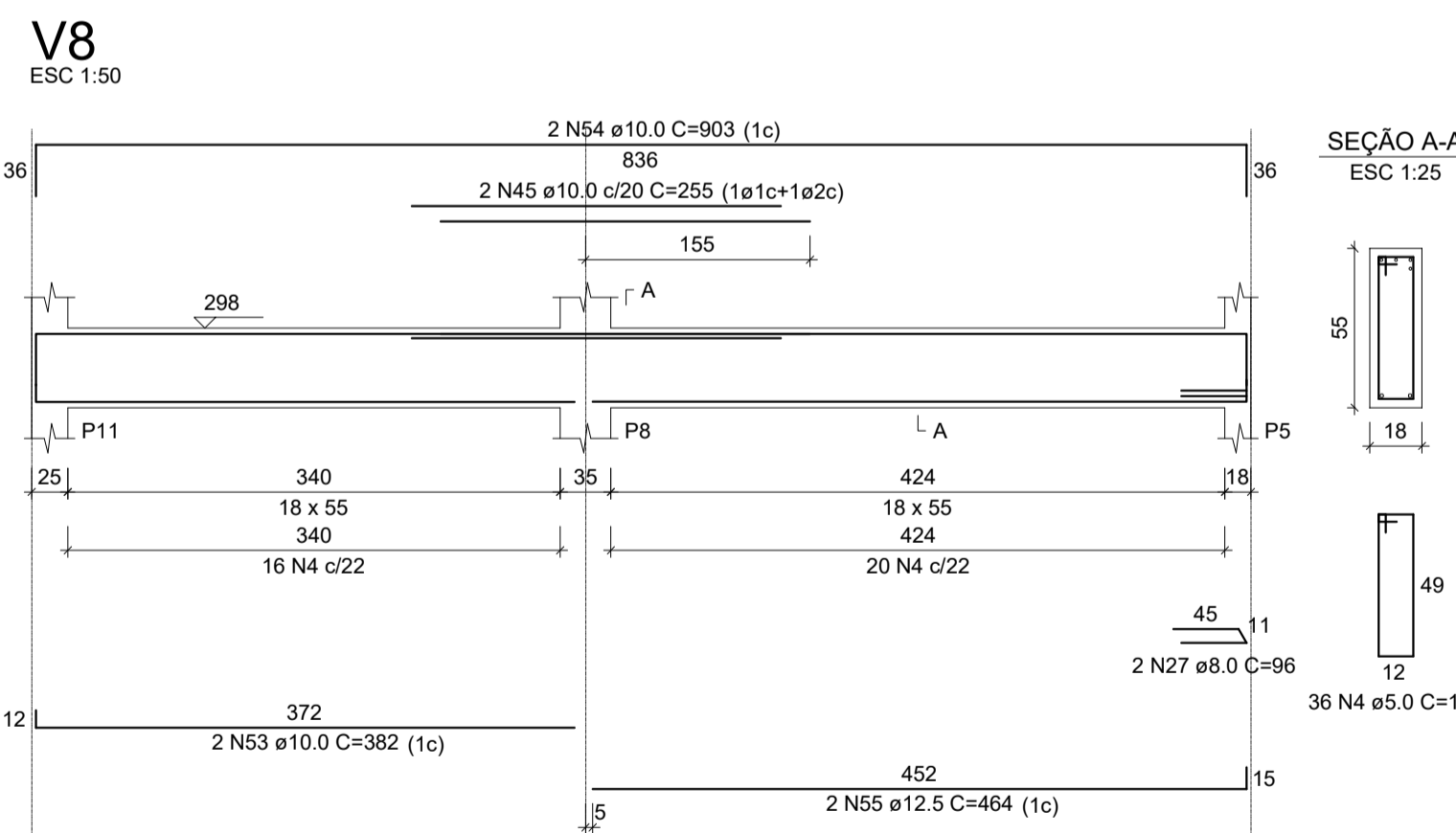
AÇO	N	DIAM (mm)	QUANT	C.UNIT (cm)	C.TOTAL (cm)
CA60	1	5.0	150	103	16377
CA60	2	5.0	47	83	3901
CA60	3	5.0	44	113	4972
CA60	4	5.0	36	133	4788
CA60	5	5.0	44	123	5412
CA50	6	6.3	6	290	1740
CA50	7	8.0	1	277	277
CA50	8	8.0	2	276	552
CA50	9	8.0	2	785	1570
CA50	10	8.0	1	309	309
CA50	11	8.0	1	249	249
CA50	12	8.0	4	801	3204
CA50	13	8.0	1	246	246
CA50	14	8.0	1	250	250
CA50	15	8.0	2	180	360
CA50	16	8.0	2	216	432
CA50	17	8.0	1	391	391
CA50	18	8.0	1	246	246
CA50	19	8.0	1	175	175
CA50	20	8.0	2	951	1922
CA50	21	8.0	1	245	245
CA50	22	8.0	1	246	246
CA50	23	8.0	1	151	151
CA50	24	8.0	4	1059	4236
CA50	25	8.0	2	227	454
CA50	26	8.0	2	271	542
CA50	27	8.0	2	192	384
CA50	28	8.0	1	170	170
CA50	29	8.0	2	235	470
CA50	30	8.0	3	279	837
CA50	31	8.0	1	160	160
CA50	32	8.0	1	272	272
CA50	33	8.0	1	230	230
CA50	34	8.0	1	215	215
CA50	35	8.0	1	482	482
CA50	36	8.0	1	185	185
CA50	37	8.0	1	372	372
CA50	38	8.0	2	1076	2152
CA50	39	8.0	2	389	778
CA50	40	8.0	1	129	129
CA50	41	8.0	2	433	866
CA50	42	10.0	2	225	450
CA50	43	10.0	1	142	142
CA50	44	10.0	2	821	1642
CA50	45	10.0	4	255	1020
CA50	46	10.0	2	838	1676
CA50	47	10.0	2	240	480
CA50	48	10.0	2	853	1706
CA50	49	10.0	2	280	560
CA50	50	10.0	2	1004	2008
CA50	51	10.0	1	591	591
CA50	52	10.0	2	1070	2140
CA50	53	10.0	2	382	764
CA50	54	10.0	2	903	1806
CA50	55	12.5	2	464	928



RESUMO DO AÇO

AÇO	DIAM (mm)	C.TOTAL (m)	PESO + 10% (kg)
CA50	6.3	17.4	4.7
CA50	8.0	235.7	102.3
CA50	10.0	149.8	101.6
CA60	12.5	9.3	9.8
CA60	5.0	354.5	60.1
PESO TOTAL (kg)			
CA50		218.4	
CA60		60.1	

Volume de concreto (C-25) = 5.64 m³  
Área de forma = 75.81 m²



Rua Roberto Trompowski, 68 2º andar - Tel: 49 3522.2800 Fax: 35220235 www.ammoc.com.br e-mail ammoc@ammoc.com.br - JOIÇABA SC

**PREFEITURA MUNICIPAL DE CAPINZAL**

Obra: PROJETO DE REFORMA E AMPLIAÇÃO CIA LAR  
Conteúdo: VIGAS TERREO

Referência: PROJETO ESTRUTURAL

Local da Obra: RUA EMILIO BARISON

Quaisquer alterações consulte os responsáveis técnicos

Assinatura Responsável Técnico: \_\_\_\_\_ Assinatura Prefeito(a) Municipal: \_\_\_\_\_

Projeto: DENIR NARCIZO ZULIAN - ENG. CIVIL - CREA/SC 50.805-8  
MICHEL ALBERTI - ENG. CIVIL - CREA/SC 80.032-6  
ANA JÚLIA UNGERICH - ENG. CIVIL-CREA/SC 105.295-8

Prancha: **EST 08/09**

Desenho: ANDRÉ / MAX Data: ABRIL / 2018 Escala: INDICADA(S) Área Total: \_\_\_\_\_